



# Slaugham Parish Council

Quarterly newsletter: Spring/Summer 2024

## Welcome

Welcome to the Slaugham Parish Council Newsletter!

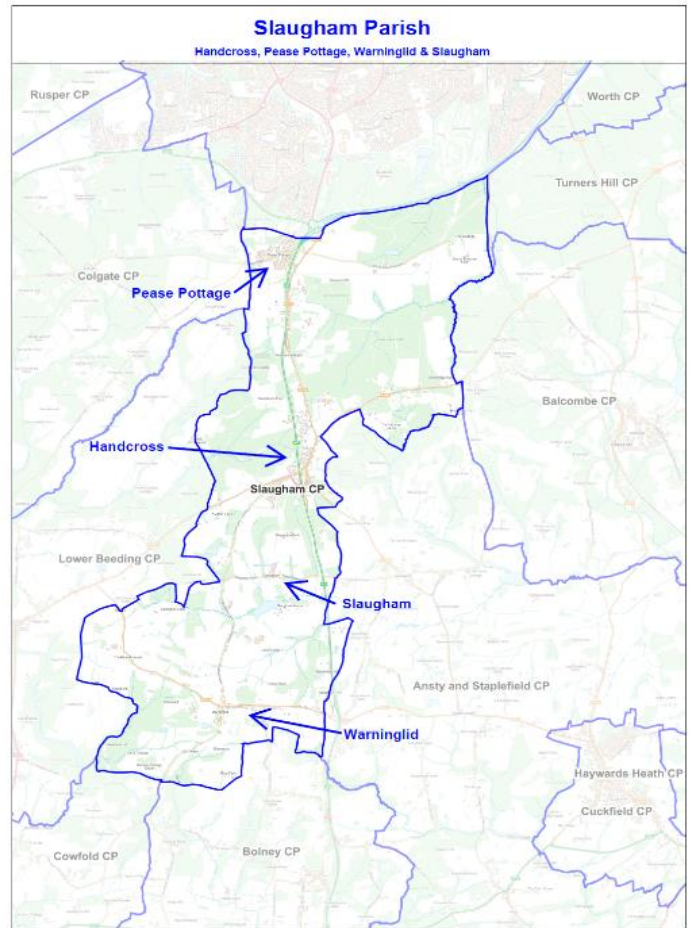
Slaugham Parish covers the four villages of Slaugham, Handcross, Pease Pottage and Warninglid and is one of the larger parishes within the Mid Sussex District Council.

There have been huge changes in our parish over the last few years and with the new development of Woodgate in Pease Pottage and Hoadlands in Handcross we have welcomed many new people to the community.

The purpose of this newsletter is to give local residents a better understanding of what we do, what is happening in the parish, new projects planned in the future, and how you can have your say.

We look forward to hearing your thoughts and working with you.

Councillor Julia Elliott, Chair Slaugham Parish Council



## The role of the Parish Council

A parish council is the first tier of government, representing local people and striving to improve quality of life in the parish.

Parish Councillors are unpaid local people who have been elected by the community to serve a four year term. There are currently two vacancies on the Council, so please get in touch if you would like to get involved. The full council meets 10 times per year, with additional committee meetings as required. Meetings are open to the public and include time for people to raise issues and ask questions.

The parish is split into two wards.

- **Handcross and Pease Pottage** is represented by Julia Elliot (Chair), Eric Prescott (vice chair and also a Mid Sussex District Councillor), Lesley Read, Bob St George, Jane MacNaughton, Carole Steggles, Phil Morris, Gary Marsh (also a Mid Sussex District Councillor) and Adrienne Melville.
- **Slaugham and Warninglid** is represented by David Dunn.

Councillor contact details and more information about the role of the Parish Council can be found on our website (<http://www.slaughampc.co.uk/>) and you can also contact the Parish Clerk, Sally McLean via 01403 733881 or [clerk@slaughampc.co.uk](mailto:clerk@slaughampc.co.uk).

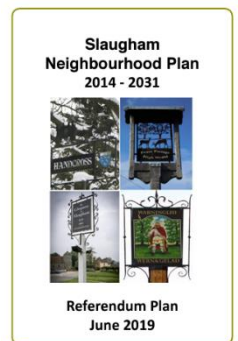
Other levels of government that cover our parish are as follows.

- Mid Sussex District Council are responsible for collecting rubbish and recycling (including dog waste), social housing, maintaining green spaces and local elections.
- West Sussex County Council are responsible for highways and rights of way, education, fire and emergency services, libraries, and adult and child social care.
- At present the Villages of Handcross and Pease Pottage are in the Horsham Constituency, this will change at the next General Election to fall into the East Grinstead & Uckfield Constituency. The villages of Slaugham and Warninglid fall under the Mid-Sussex Constituency and will remain so at the next election.

## Neighbourhood Plan and Planning

The Parish Council produced a '[Neighbourhood Plan](#)' in 2019 which has now been adopted following a lot of consultation with the local community. This sets out a vision for the parish, including a new development at St Martin Close in Handcross, where we hope to work with the Community Land Trust to provide affordable housing in perpetuity for local people. Expect to hear more about this during 2024.

Mid Sussex District Council is responsible for local planning decisions, but the Parish Council is consulted on planning applications in the parish and the planning committee meets monthly. Members of the public are welcome to attend.



## Recreation

The Parish Council oversees various aspects within the parish, including the common land, village greens, open spaces, street lights, playing fields, buildings, and allotments.

- The Pavilion on the Handcross Recreation ground (renovated in 2019) and the new MacNaughton Hall in Pease Pottage are both available for hire.
- Football pitches at Finches Field in Pease Pottage and at Handcross Recreation ground are used by local football clubs.
- There are two allotment sites managed by the Council, one in Handcross on Horsham Road, the other in Warninglid near the Recreation Ground. There is a waiting list for allotments – please contact the Clerk if you want more information.
- Knapes Field in Handcross (behind the allotments) was recently purchased by the council to develop an open space for people to enjoy.

## Residents Survey

We want to hear your priorities for development in Slaugham Parish and feedback on how we are doing as a Parish Council and what we can do better.

Please complete our survey to help us understand the needs of people in the parish and how you want us to communicate. You can access the survey through our website ([www.slaughampc.co.uk](http://www.slaughampc.co.uk)), by scanning the QR code to the right, or by clicking the following link: <https://forms.office.com/e/hPTvhFJGct>.



The survey will be open until 30<sup>th</sup> June 2024. You do not have to provide any personal data, but any personal data you do share will be used in accordance with the data protection act and not passed on.

Thank you!

**Please get in touch if you have any recommendations for content that you'd like to see featured in the next quarterly newsletter.**